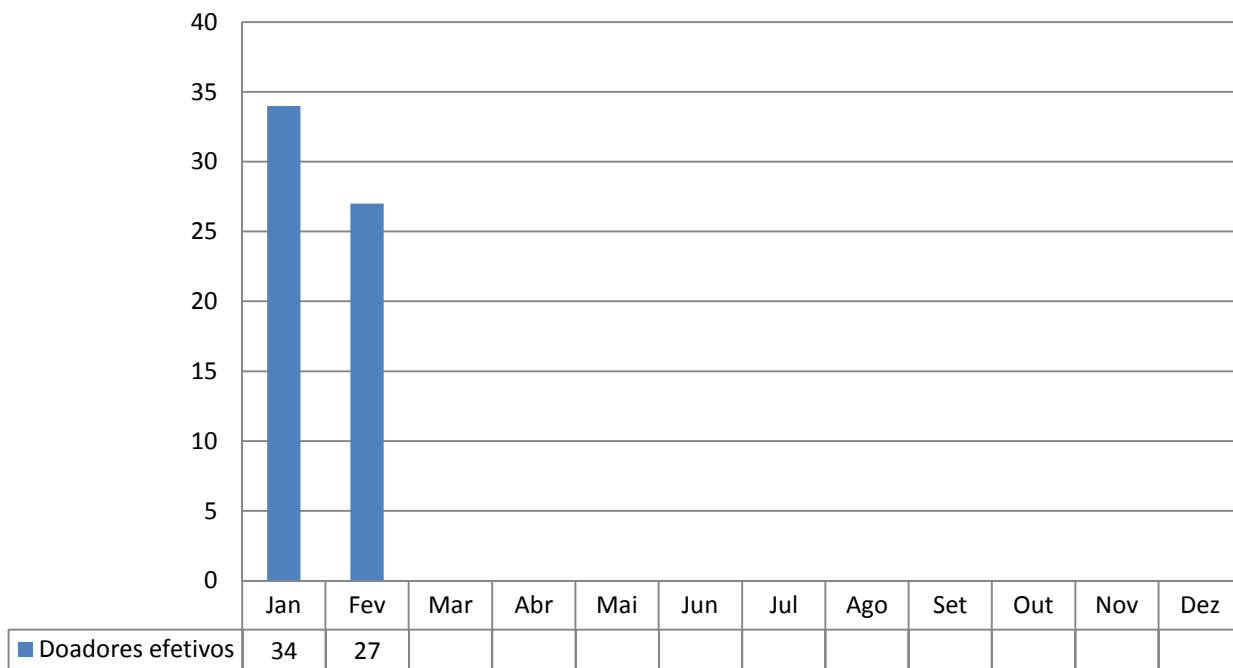
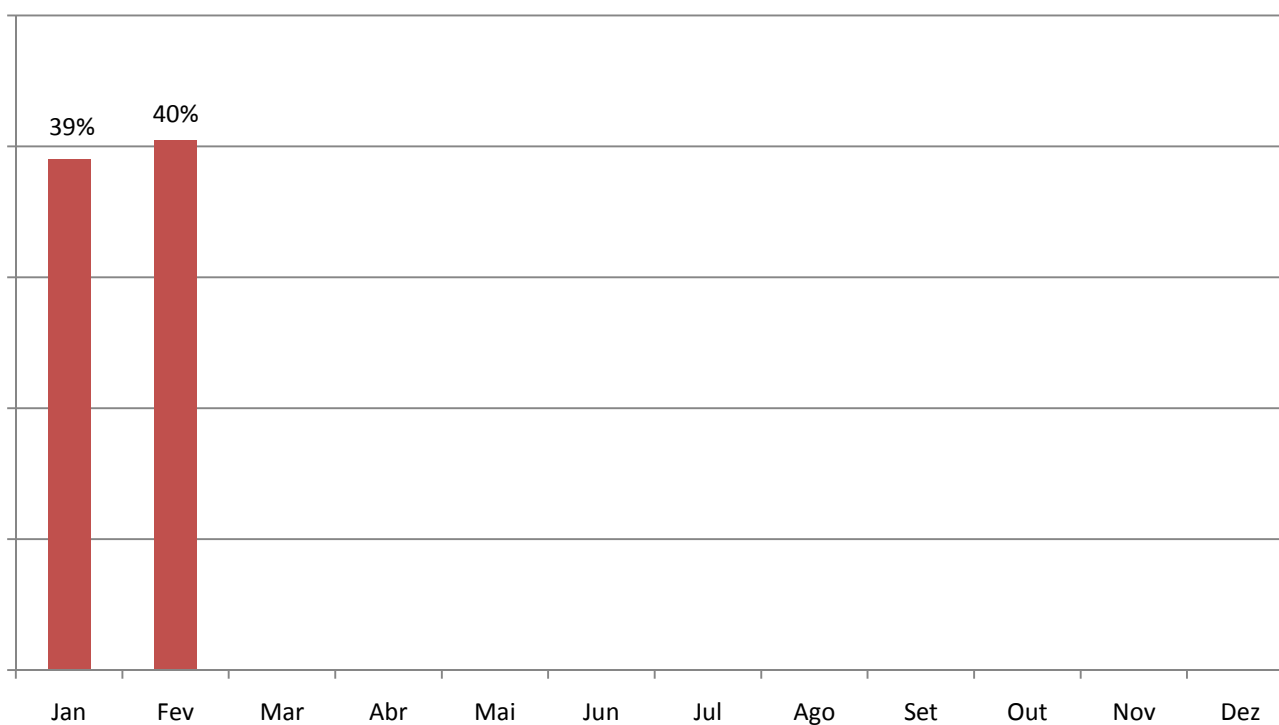


CENTRAL DE TRANSPLANTES DO RS EM 2017

Total de doadores no RS em 2017

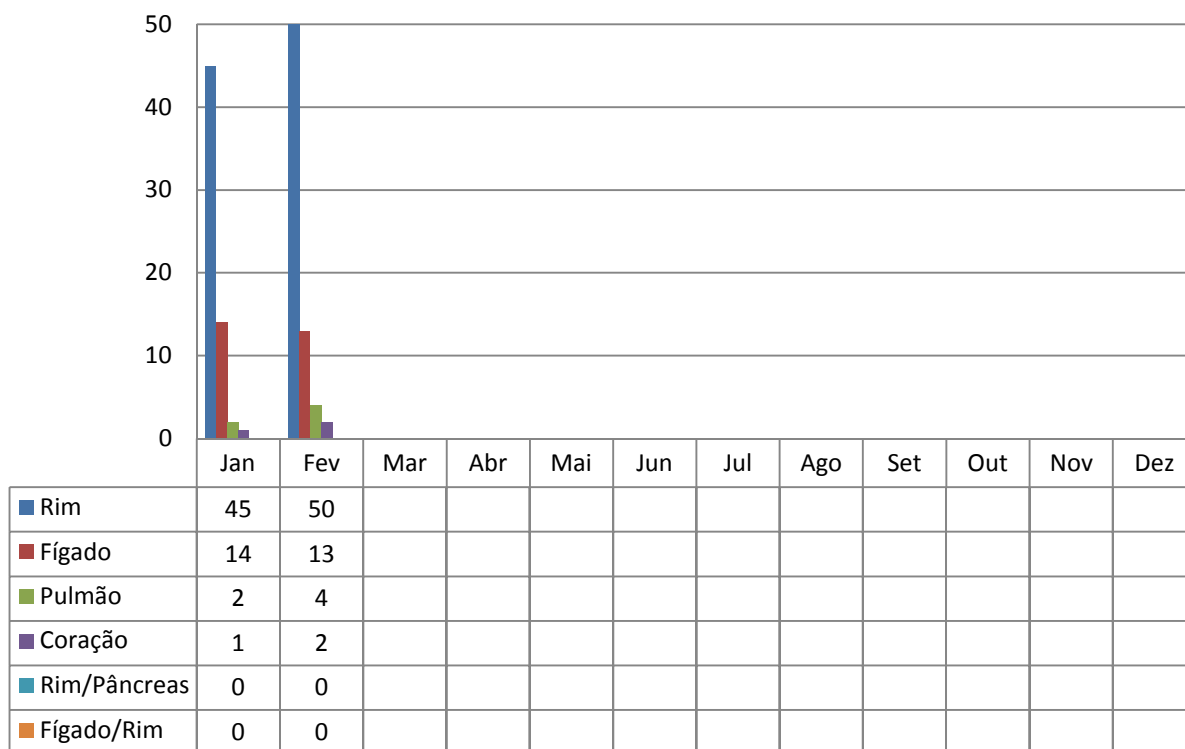


Percentual de Negativa Familiar no RS em 2017

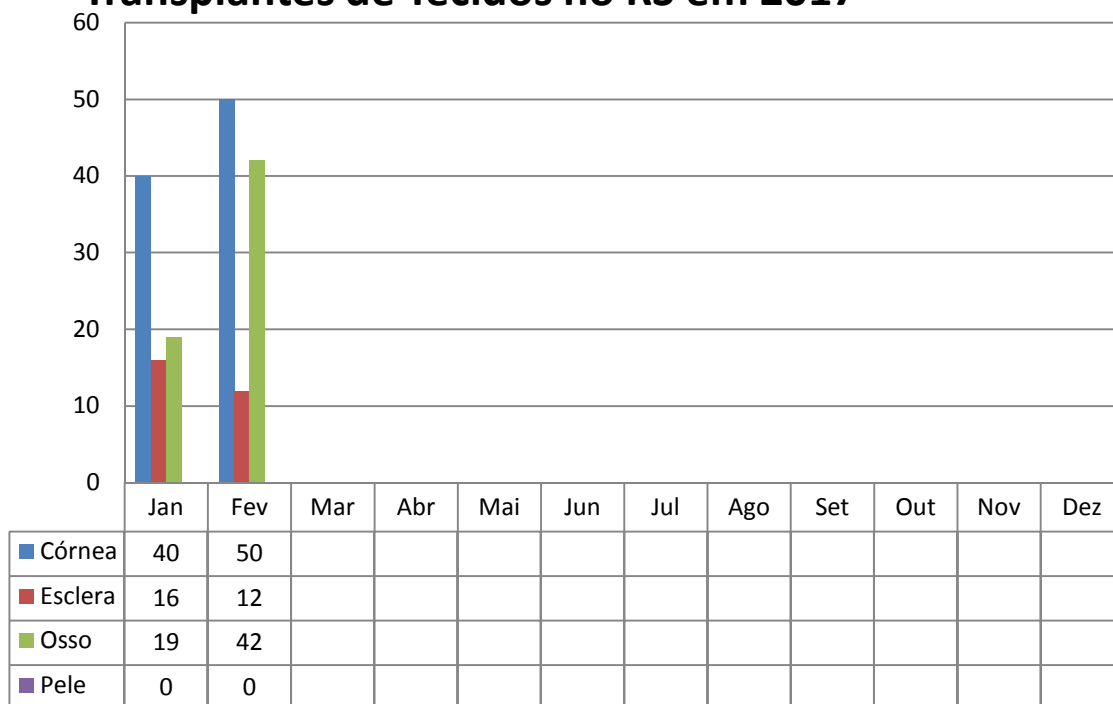


CENTRAL DE TRANSPLANTES DO RS EM 2017

Transplantes de Órgãos no RS em 2017

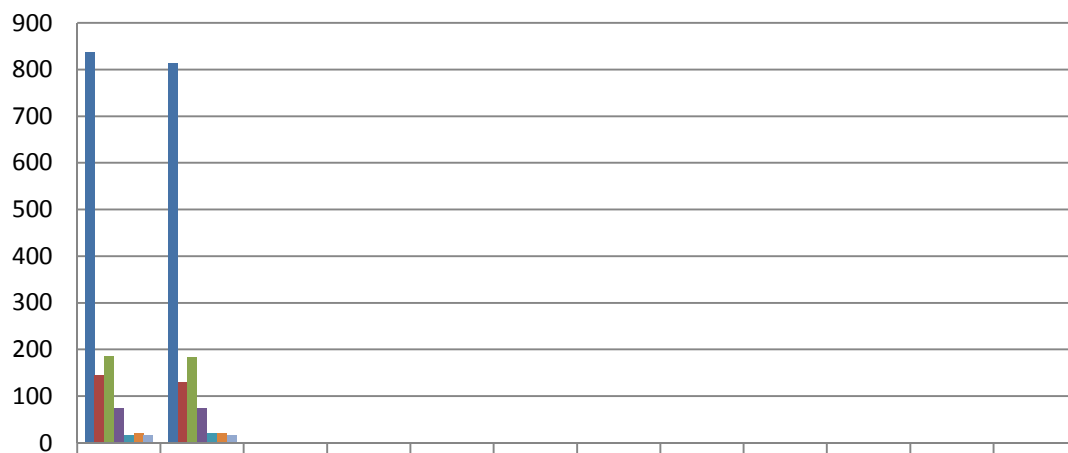


Transplantes de Tecidos no RS em 2017



CENTRAL DE TRANSPLANTES DO RS EM 2017

Lista de Espera no RS em 2017



	Jan	Fev	Mar	Abr	Mai	Jun	Jul	Ago	Set	Out	Nov	Dez
■ Rim	836	813										
■ Fígado	144	130										
■ Medula Óssea	185	183										
■ Pulmão	74	74										
■ Córnea	16	20										
■ Coração	21	21										
■ Rim/Pâncreas	15	15										