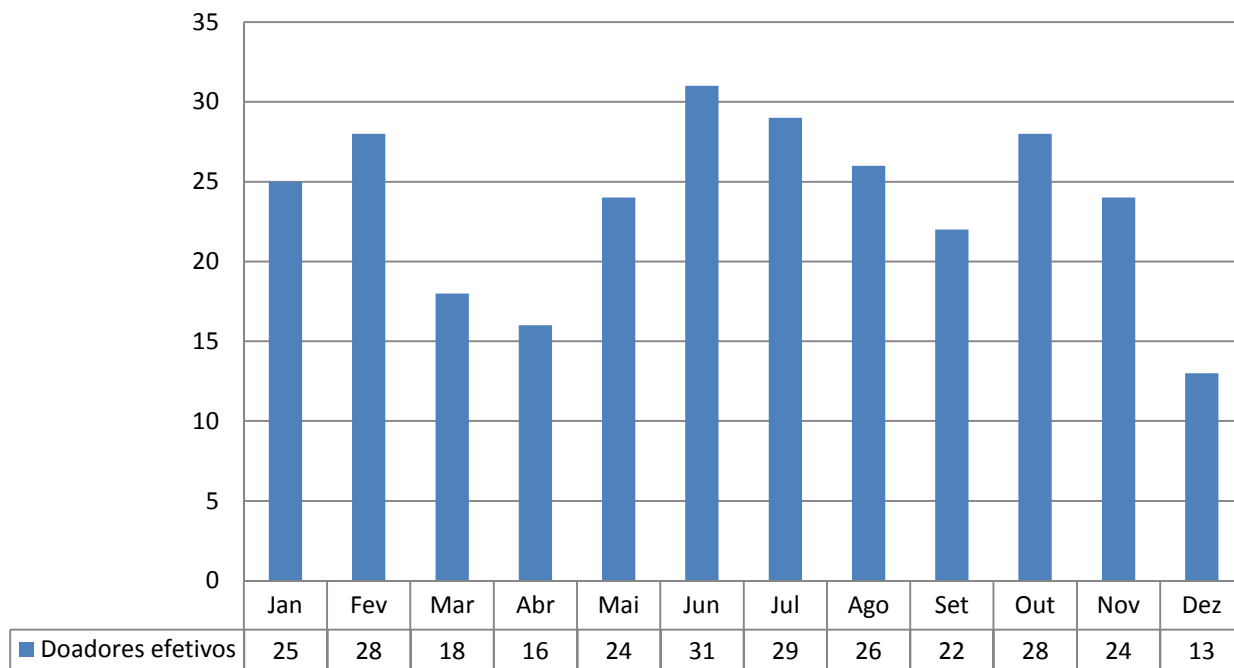
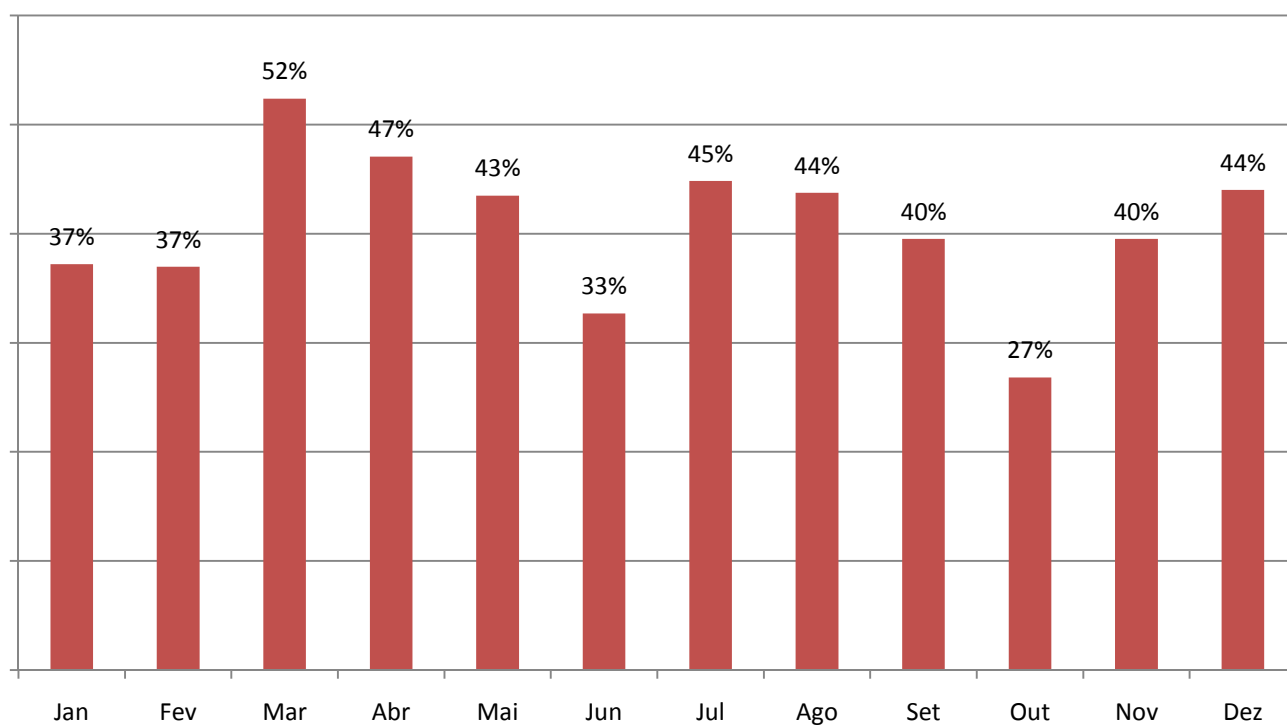


# CENTRAL DE TRANSPLANTES DO RS EM 2016

## Total de doadores no RS em 2016

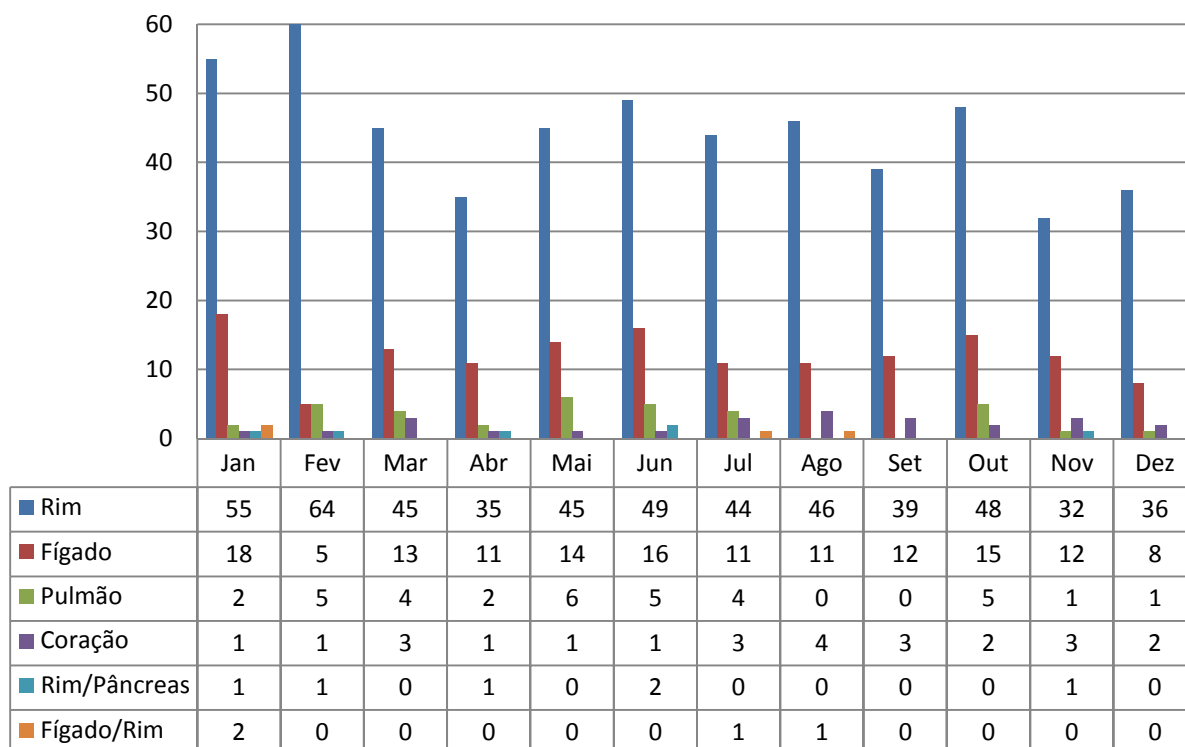


## Percentual de Negativa Familiar no RS em 2016

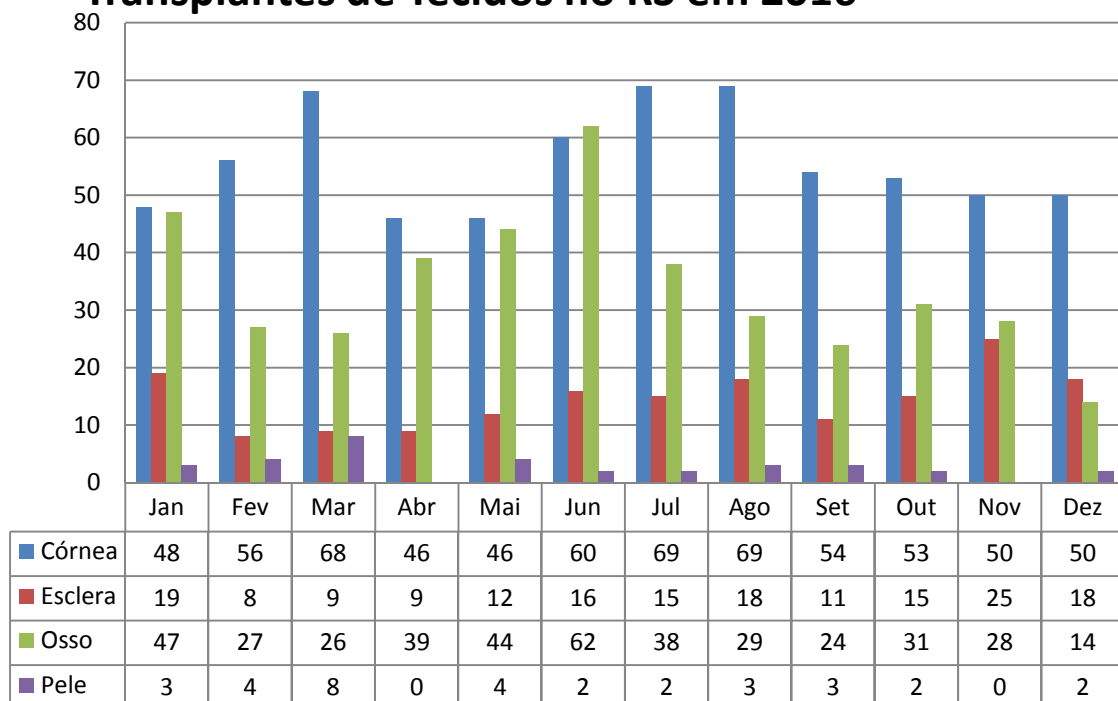


# CENTRAL DE TRANSPLANTES DO RS EM 2016

## Transplantes de Órgãos no RS em 2016

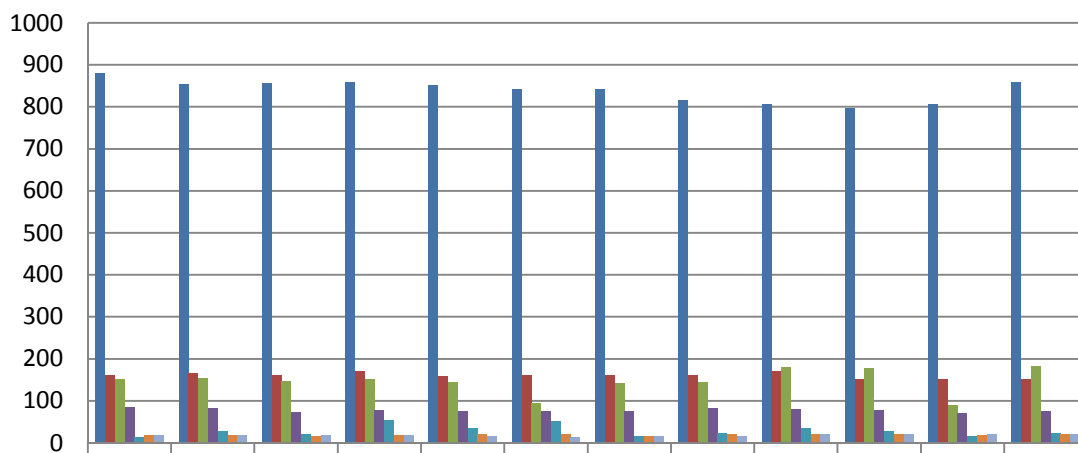


## Transplantes de Tecidos no RS em 2016



# CENTRAL DE TRANSPLANTES DO RS EM 2016

## Lista de Espera no RS em 2016



	Jan	Fev	Mar	Abr	Mai	Jun	Jul	Ago	Set	Out	Nov	Dez
■ Rim	880	854	855	857	851	841	842	816	807	797	806	857
■ Fígado	160	165	161	170	159	160	160	161	170	152	151	152
■ Medula Óssea	150	153	147	150	144	94	142	145	180	177	89	181
■ Pulmão	85	82	73	76	74	75	74	82	80	77	70	74
■ Córnea	14	27	20	54	35	51	16	23	34	27	16	23
■ Coração	18	18	16	18	21	20	15	19	21	20	18	20
■ Rim/Pâncreas	17	17	18	17	16	14	15	15	19	19	19	19