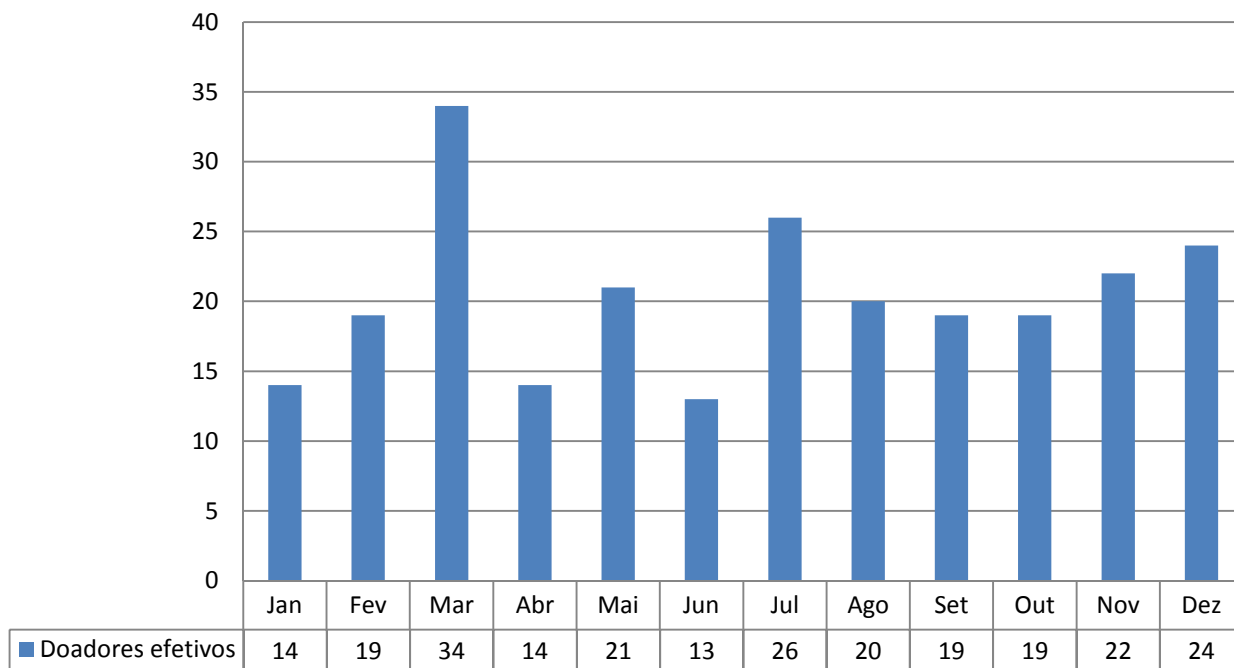
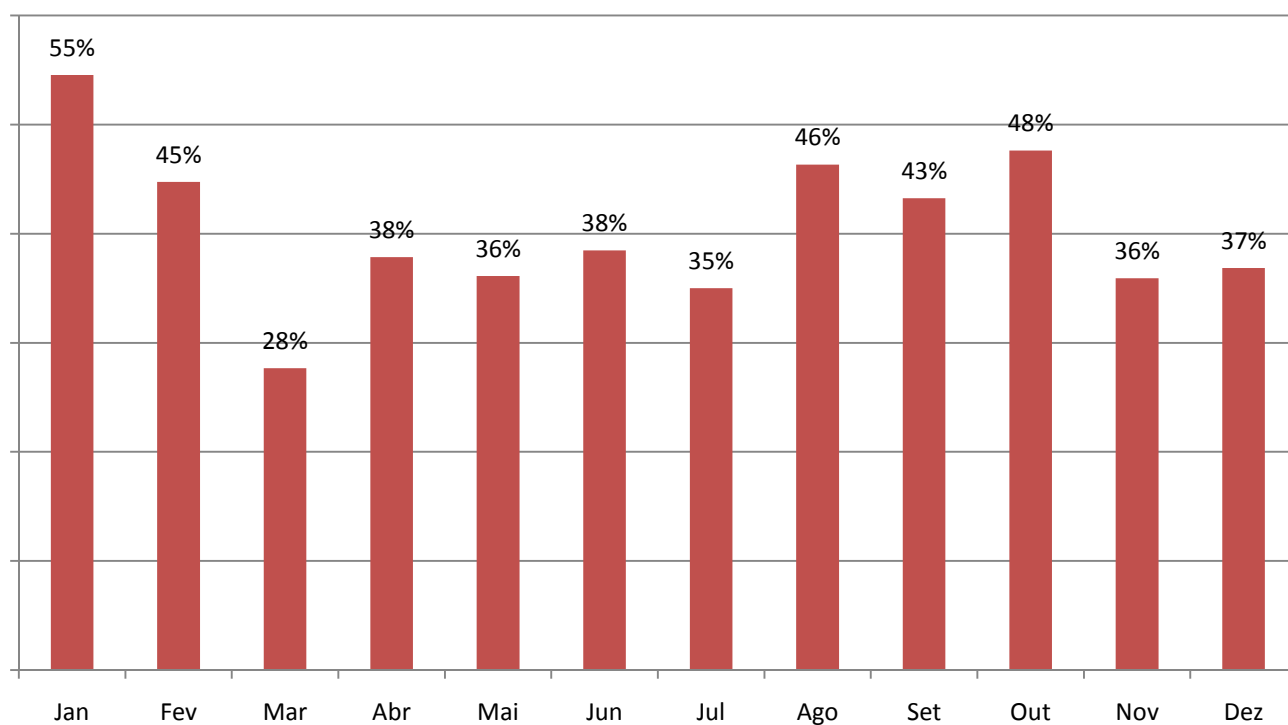


# CENTRAL DE TRANSPLANTES DO RS EM 2015

## Total de doadores no RS em 2015

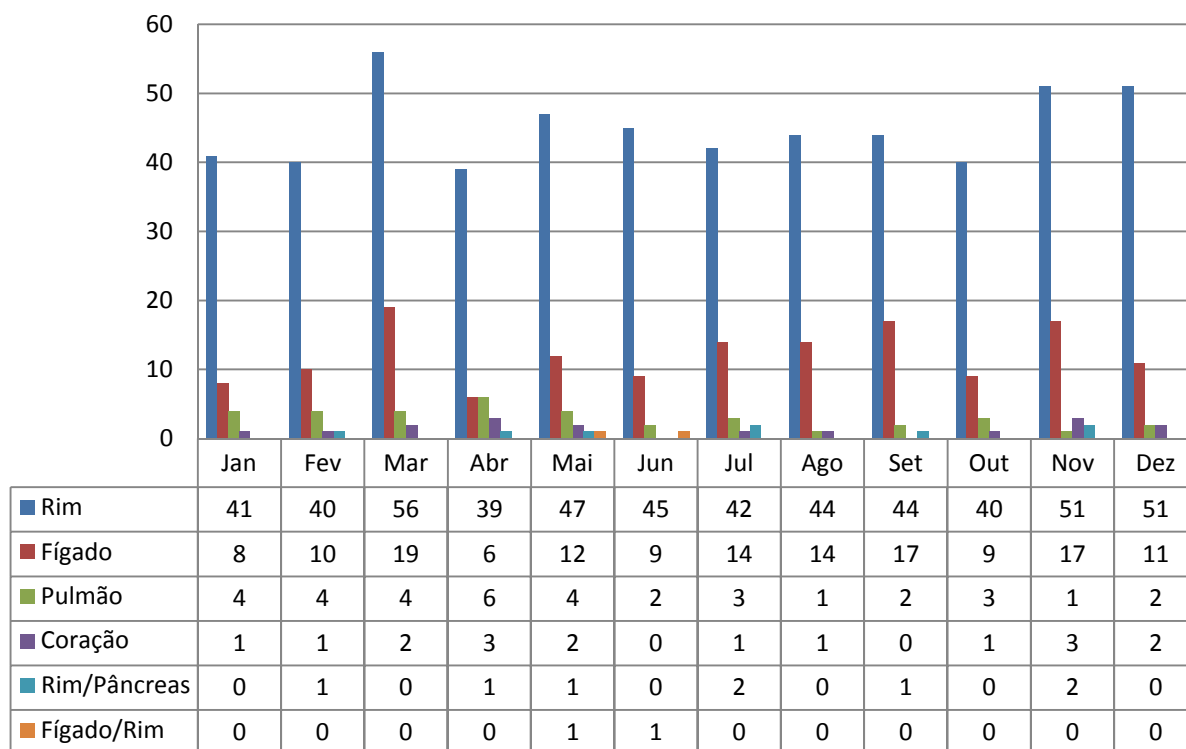


## Percentual de Negativa Familiar no RS em 2015

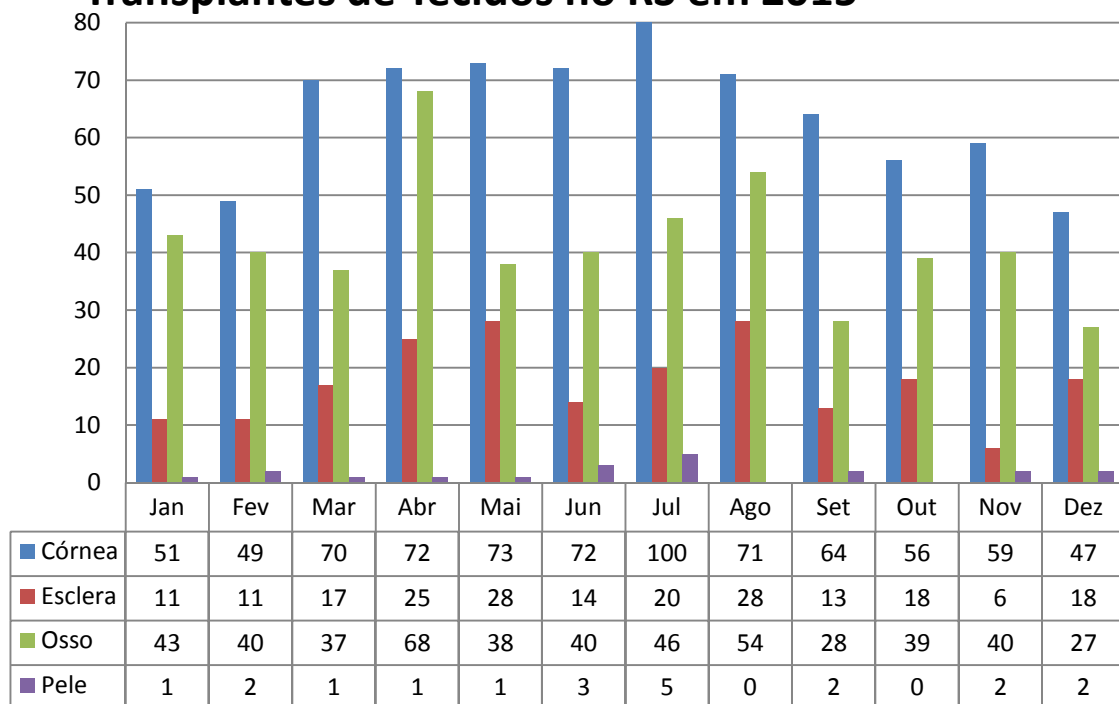


# CENTRAL DE TRANSPLANTES DO RS EM 2015

## Transplantes de Órgãos no RS em 2015

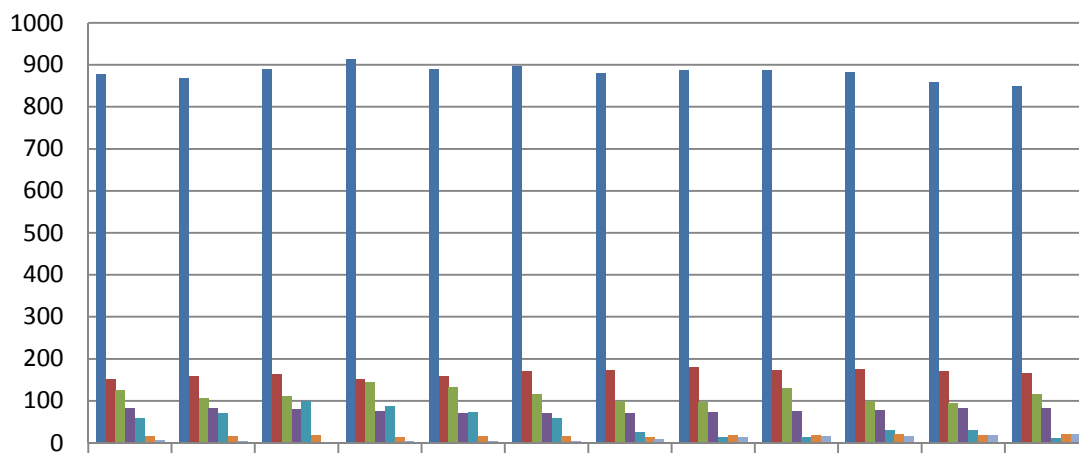


## Transplantes de Tecidos no RS em 2015



# CENTRAL DE TRANSPLANTES DO RS EM 2015

## Lista de Espera no RS em 2015



	Jan	Fev	Mar	Abr	Mai	Jun	Jul	Ago	Set	Out	Nov	Dez
■ Rim	878	869	890	912	890	896	880	886	886	882	857	850
■ Fígado	152	158	162	152	158	169	174	180	172	176	171	165
■ Medula Óssea	126	105	110	145	132	116	100	97	130	100	94	115
■ Pulmão	83	82	81	75	70	69	70	73	75	78	82	82
■ Córnea	59	70	98	86	72	58	26	13	14	30	29	10
■ Coração	15	16	17	14	15	16	13	17	18	21	17	19
■ Rim/Pâncreas	5	4	2	4	3	4	9	13	15	16	17	20